

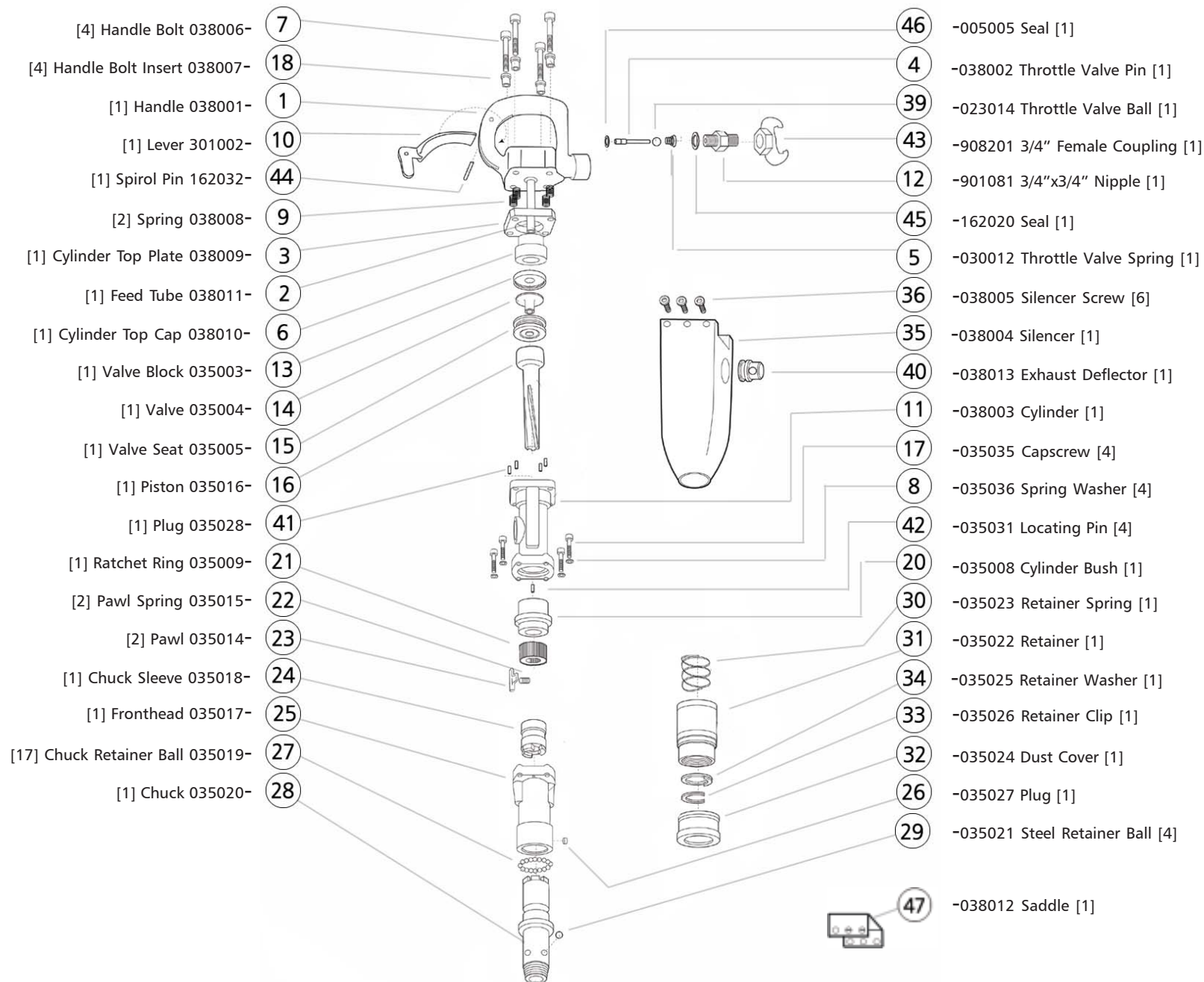


DR4VRS - 1615V - 2315V

DR4VRS parts list



VR DRILLS



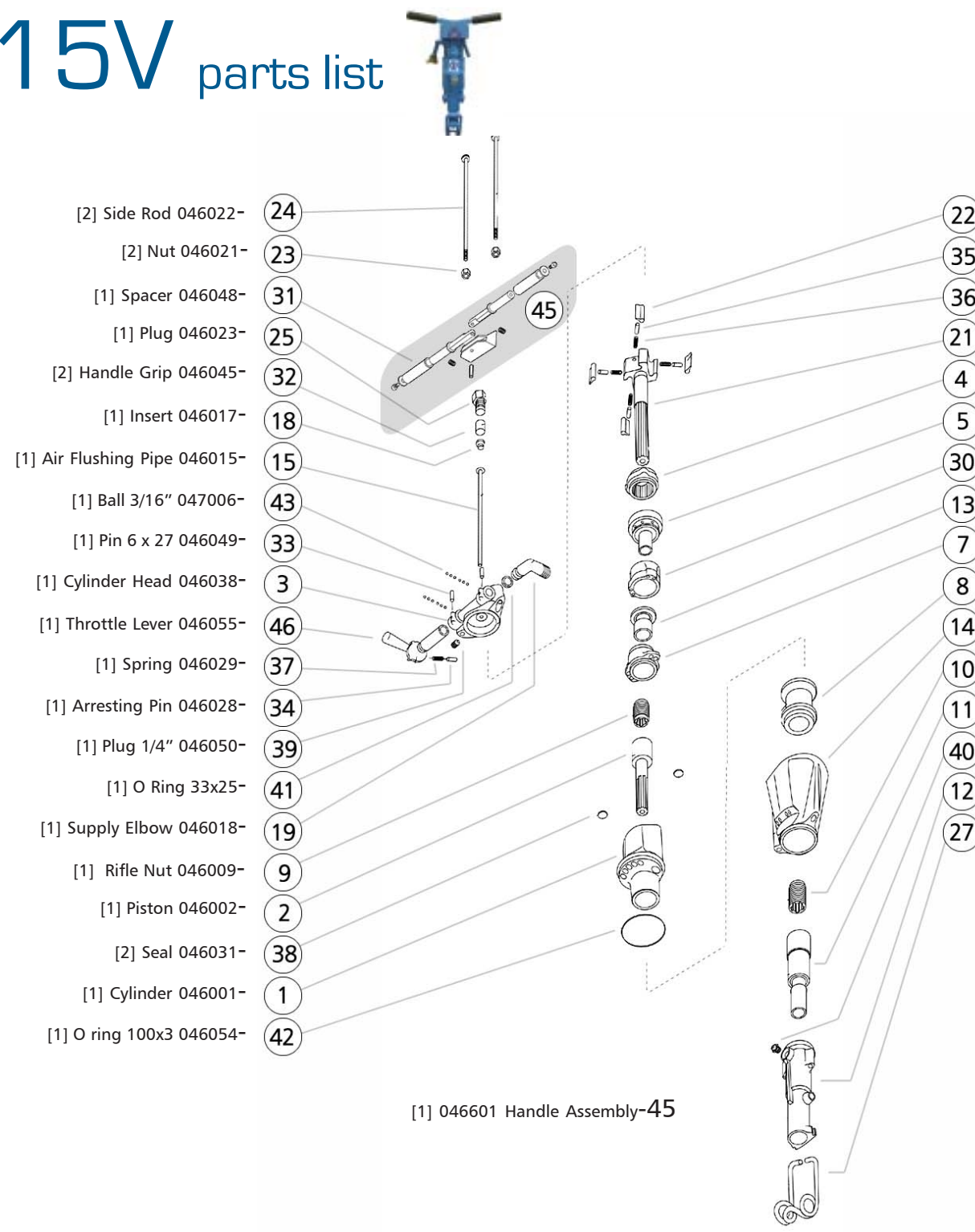
- [4] Handle Bolt 038006- (7)
- [4] Handle Bolt Insert 038007- (18)
- [1] Handle 038001- (1)
- [1] Lever 301002- (10)
- [1] Spirol Pin 162032- (44)
- [2] Spring 038008- (9)
- [1] Cylinder Top Plate 038009- (3)
- [1] Feed Tube 038011- (2)
- [1] Cylinder Top Cap 038010- (6)
- [1] Valve Block 035003- (13)
- [1] Valve 035004- (14)
- [1] Valve Seat 035005- (15)
- [1] Piston 035016- (16)
- [1] Plug 035028- (41)
- [1] Ratchet Ring 035009- (21)
- [2] Pawl Spring 035015- (22)
- [2] Pawl 035014- (23)
- [1] Chuck Sleeve 035018- (24)
- [1] Fronthead 035017- (25)
- [17] Chuck Retainer Ball 035019- (27)
- [1] Chuck 035020- (28)

- (46) -005005 Seal [1]
- (4) -038002 Throttle Valve Pin [1]
- (39) -023014 Throttle Valve Ball [1]
- (43) -908201 3/4" Female Coupling [1]
- (12) -901081 3/4"x3/4" Nipple [1]
- (45) -162020 Seal [1]
- (5) -030012 Throttle Valve Spring [1]
- (36) -038005 Silencer Screw [6]
- (35) -038004 Silencer [1]
- (40) -038013 Exhaust Deflector [1]
- (11) -038003 Cylinder [1]
- (17) -035035 Capscrew [4]
- (8) -035036 Spring Washer [4]
- (42) -035031 Locating Pin [4]
- (20) -035008 Cylinder Bush [1]
- (30) -035023 Retainer Spring [1]
- (31) -035022 Retainer [1]
- (34) -035025 Retainer Washer [1]
- (33) -035026 Retainer Clip [1]
- (32) -035024 Dust Cover [1]
- (26) -035027 Plug [1]
- (29) -035021 Steel Retainer Ball [4]
- (47) -038012 Saddle [1]

1615V parts list



VR DRILLS



- [2] Side Rod 046022- (24)
- [2] Nut 046021- (23)
- [1] Spacer 046048- (31)
- [1] Plug 046023- (25)
- [2] Handle Grip 046045- (32)
- [1] Insert 046017- (18)
- [1] Air Flushing Pipe 046015- (15)
- [1] Ball 3/16" 047006- (43)
- [1] Pin 6 x 27 046049- (33)
- [1] Cylinder Head 046038- (3)
- [1] Throttle Lever 046055- (46)
- [1] Spring 046029- (37)
- [1] Arresting Pin 046028- (34)
- [1] Plug 1/4" 046050- (39)
- [1] O Ring 33x25- (41)
- [1] Supply Elbow 046018- (19)
- [1] Rifle Nut 046009- (9)
- [1] Piston 046002- (2)
- [2] Seal 046031- (38)
- [1] Cylinder 046001- (1)
- [1] O ring 100x3 046054- (42)

- (22) -046020 Pawl [4]
- (35) -047032 Pin [4]
- (36) -047033 Spring [4]
- (21) -046019 Rifle Bar [1]
- (4) -046004 Ratchet Ring [1]
- (5) -046005 Upper Valve Cover[1]
- (30) -046006 Valve Body [1]
- (13) -046013 Valve [1]
- (7) -046007 Lower Valve Cover [1]
- (8) -046008 Impact Bush[1]
- (14) -046014 Silencer [1]
- (10) -046010 Carrier [1]
- (11) -see note A
- (40) -046051 Grease Nipple [1]
- (12) -see note B
- (27) -see note C

[1] 046601 Handle Assembly-45

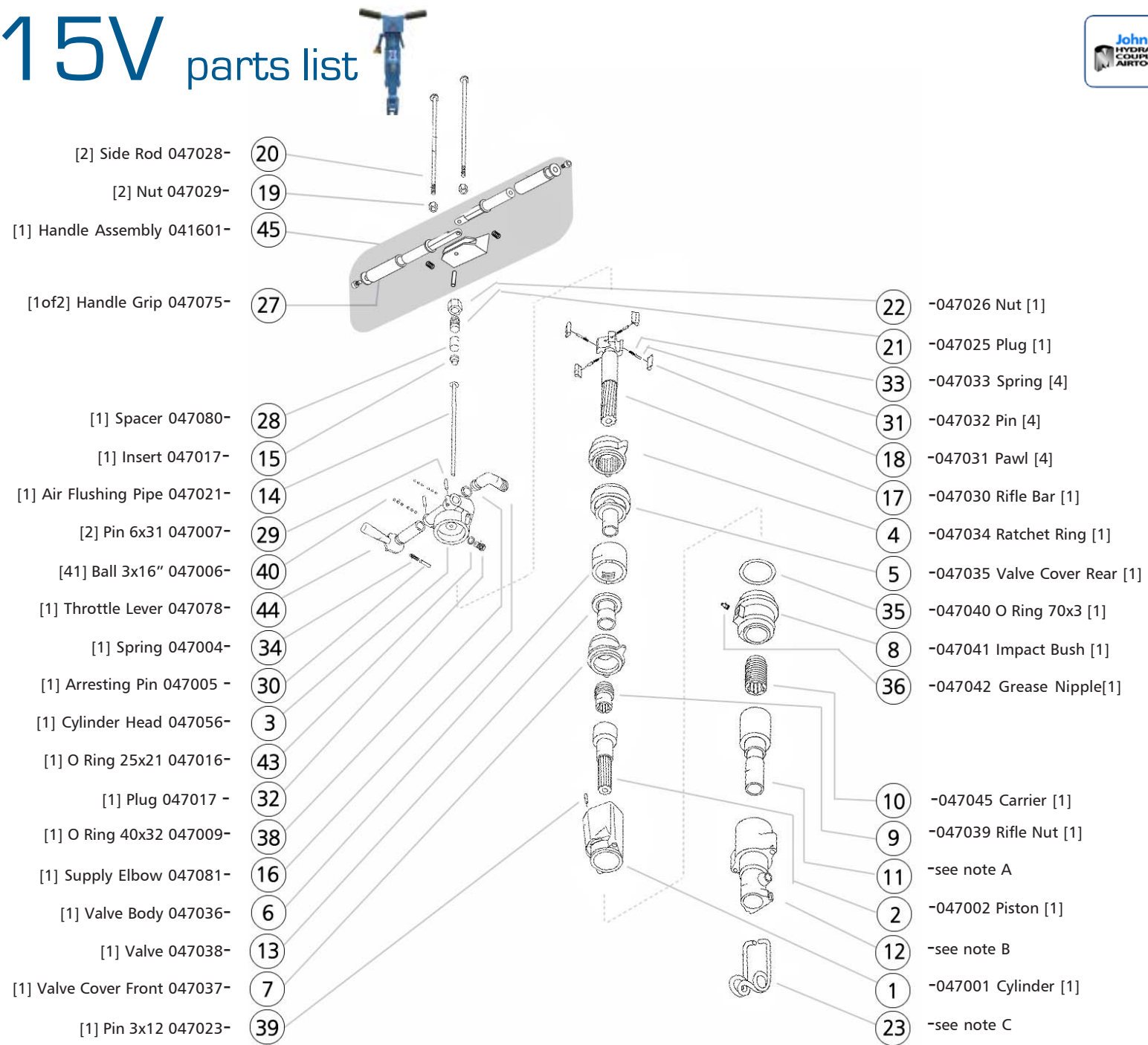
Notes

- note A: toolnose 7/8"x4.1/4" 046033
- toolnose 7/8"x3.1/4" 046039
- note B: cylinder 7/8"x4.1/4" 046034
- cylinder 7/8"x3.1/4" 046040
- note C: retainer 7/8"x4.1/4" 046037
- retainer 7/8"x3.1/4" 046041

2315V parts list



VR DRILLS



- [2] Side Rod 047028- (20)
- [2] Nut 047029- (19)
- [1] Handle Assembly 041601- (45)
- [1of2] Handle Grip 047075- (27)
- [1] Spacer 047080- (28)
- [1] Insert 047017- (15)
- [1] Air Flushing Pipe 047021- (14)
- [2] Pin 6x31 047007- (29)
- [41] Ball 3x16" 047006- (40)
- [1] Throttle Lever 047078- (44)
- [1] Spring 047004- (34)
- [1] Arresting Pin 047005 - (30)
- [1] Cylinder Head 047056- (3)
- [1] O Ring 25x21 047016- (43)
- [1] Plug 047017 - (32)
- [1] O Ring 40x32 047009- (38)
- [1] Supply Elbow 047081- (16)
- [1] Valve Body 047036- (6)
- [1] Valve 047038- (13)
- [1] Valve Cover Front 047037- (7)
- [1] Pin 3x12 047023- (39)

- (22) -047026 Nut [1]
- (21) -047025 Plug [1]
- (33) -047033 Spring [4]
- (31) -047032 Pin [4]
- (18) -047031 Pawl [4]
- (17) -047030 Rifle Bar [1]
- (4) -047034 Ratchet Ring [1]
- (5) -047035 Valve Cover Rear [1]
- (35) -047040 O Ring 70x3 [1]
- (8) -047041 Impact Bush [1]
- (36) -047042 Grease Nipple[1]
- (10) -047045 Carrier [1]
- (9) -047039 Rifle Nut [1]
- (11) -see note A
- (2) -047002 Piston [1]
- (12) -see note B
- (1) -047001 Cylinder [1]
- (23) -see note C

Notes

-note A: toolnose 7/8"x3.1/4" 047060	-note B: cylinder 7/8"x3.1/4" 047063	-note C: retainer 7/8"x3.1/4" 046065
- toolnose 7/8"x4.1/4" 047061	- cylinder 7/8"x4.1/4" 047046	- retainer 7/8"x4.1/4" 047047
- toolnose 7/8"x1" 047062	- cylinder 7/8"x1" 047046	- retainer 7/8"x1" 046066